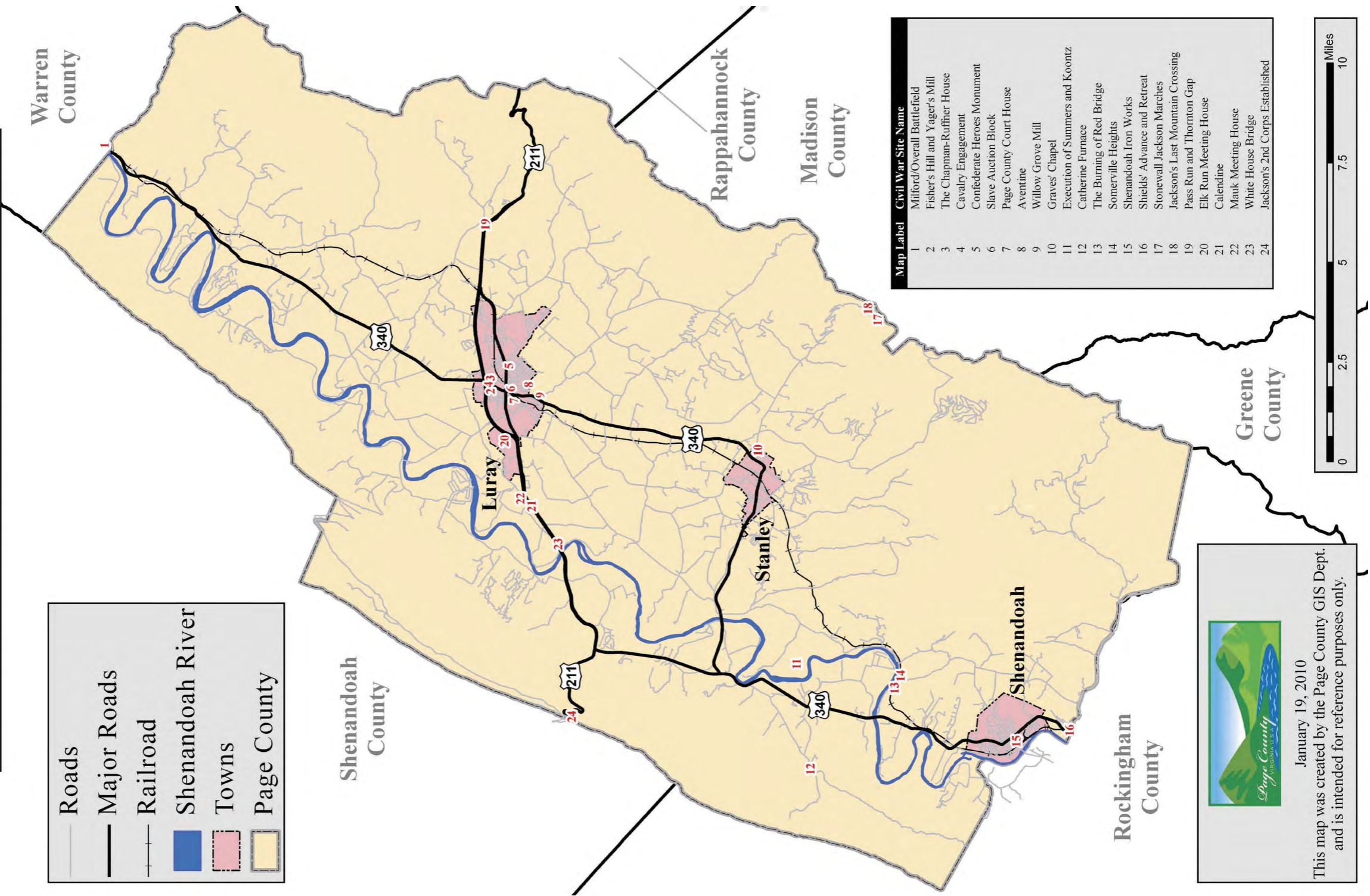


County of Page American Civil War Historic Sites



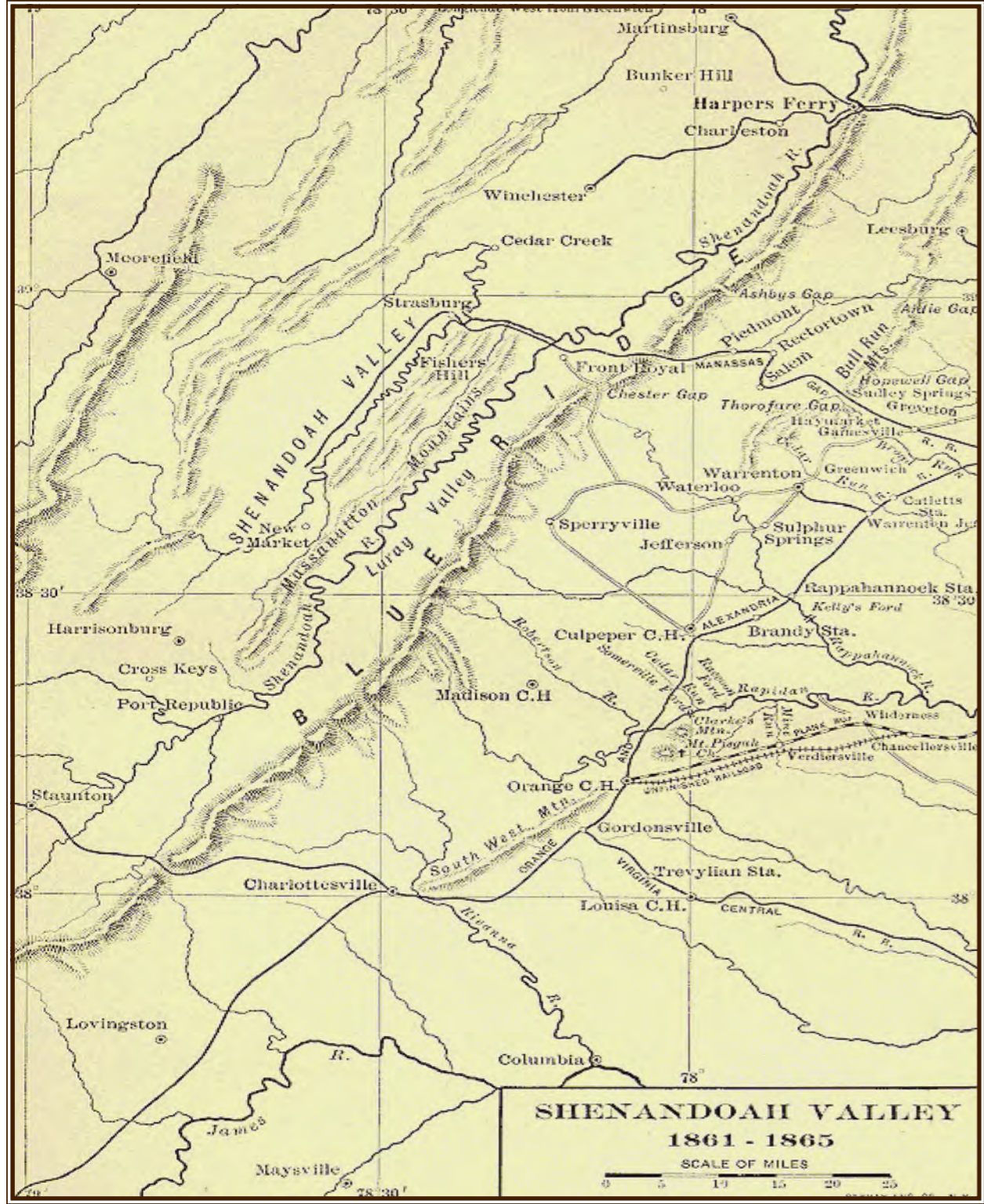
Roads
 Major Roads
 Railroad
 Shenandoah River
 Towns
 Page County



Map Label	Civil War Site Name
1	Mifflord/Overall Battlefield
2	Fisher's Hill and Yager's Mill
3	The Chapman-Ruffner House
4	Cavalry Engagement
5	Confederate Heroes Monument
6	Slave Auction Block
7	Page County Court House
8	Aventine
9	Willow Grove Mill
10	Graves Chapel
11	Execution of Summers and Koontz
12	Catherine Furnace
13	The Burning of Red Bridge
14	Somerville Heights
15	Shenandoah Iron Works
16	Shields' Advance and Retreat
17	Stonewall Jackson Marches
18	Jackson's Last Mountain Crossing
19	Pass Run and Thornton Gap
20	Elk Run Meeting House
21	Calentine
22	Mank Meeting House
23	White House Bridge
24	Jackson's 2nd Corps Established



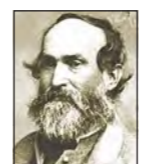
January 19, 2010
 This map was created by the Page County GIS Dept. and is intended for reference purposes only.



Confederate Leaders in Page County



Gen. Thomas J. "Stonewall" Jackson



Gen. Jubal A. Early



Gen. Richard S. Ewell



Col. Harry W. Gilmer



Maj. Jedediah Hotchkiss



Col. William H. Payne



Gen. Robert E. Rodes



Gen. Beverly H. Robertson



Gen. Richard Taylor

Union Leaders in Page County



Gen. James J. Shields



Gen. Nathaniel P. Banks



Gen. Samuel S. Carroll



Gen. George A. Custer



Gen. Charles R. Lowell, Jr.



Gen. William H. Powell



Col. Robert G. Shaw



Gen. Jeremiah C. Sullivan



Gen. Alfred T. A. Torbert

Disclaimer: The information found herein has been produced from sources believed to be reliable and every reasonable effort has been made to provide accurate and up-to-date information; no warranty, expressed or implied is made regarding accuracy.

★Denotes National Historic Registry

Produced with support from our financial partners:
 The County of Page, The Luray Caverns Corporation and the Luray-Page Chamber of Commerce

Partial grant funding received from the
 Virginia Tourism Corporation